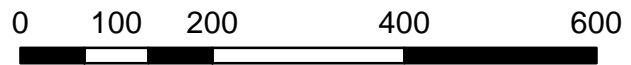


# Hampton Roads Crossing Study - Wetland Delineation Maps

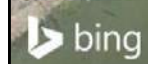
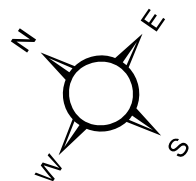
Map 9 of 20  
July 2017

## LEGEND

- Wetland Data Point
- Upland Data Point
- USM Break Point
- ▲ Tidal Wetland Confirmation Point
- Pipe
- VMRC Line
- E1OW
- E2US2
- E2US3
- E2EM
- E2FO
- E2RF
- E2SS
- PEM
- PFO
- PSS
- PUB
- R2
- R4
- R6
- Jurisdictional Ditch
- Roadside Ditch
- Study Area



1 inch = 200 feet

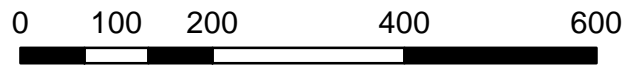


# Hampton Roads Crossing Study - Wetland Delineation Maps

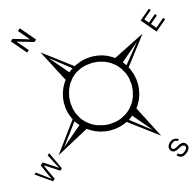
Map 10 of 20  
July 2017

## LEGEND

- Wetland Data Point
- Upland Data Point
- USM Break Point
- ▲ Tidal Wetland Confirmation Point
- Pipe
- VMRC Line
- E1OW
- E2US2
- E2US3
- E2EM
- E2FO
- E2RF
- E2SS
- PEM
- PFO
- PSS
- PUB
- R2
- R4
- R6
- Jurisdictional Ditch
- Roadside Ditch
- Study Area



1 inch = 200 feet



# Hampton Roads Crossing Study - Wetland Delineation Maps

Map 11 of 20  
July 2017

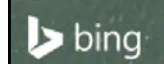
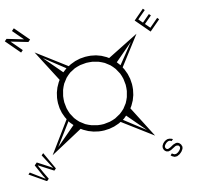
## LEGEND

- Wetland Data Point
- Upland Data Point
- USM Break Point
- ▲ Tidal Wetland Confirmation Point
- Pipe
- VMRC Line
- E1OW
- E2US2
- E2US3
- E2EM
- E2FO
- E2RF
- E2SS
- PEM
- PFO
- PSS
- PUB
- R2
- R4
- R6
- Jurisdictional Ditch
- Roadside Ditch
- Study Area



0 100 200 400 600

1 inch = 200 feet



# Hampton Roads Crossing Study - Wetland Delineation Maps

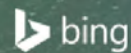
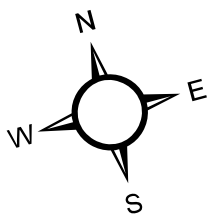
Map 12 of 20  
July 2017

## LEGEND

- Wetland Data Point
- Upland Data Point
- USM Break Point
- ▲ Tidal Wetland Confirmation Point
- Pipe
- VMRC Line
- E1OW
- E2US2
- E2US3
- E2EM
- E2FO
- E2RF
- E2SS
- PEM
- PFO
- PSS
- PUB
- R2
- R4
- R6
- Jurisdictional Ditch
- Roadside Ditch
- Study Area

0 100 200 400 600

1 inch = 200 feet



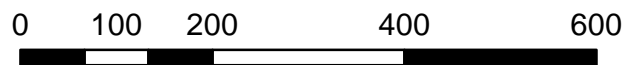
Continues Page 13

# Hampton Roads Crossing Study - Wetland Delineation Maps

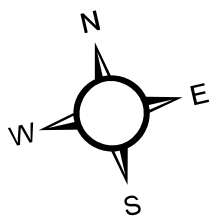
Map 13 of 20  
July 2017

## LEGEND

- Wetland Data Point
- Upland Data Point
- USM Break Point
- ▲ Tidal Wetland Confirmation Point
- Pipe
- VMRC Line
- E1OW
- E2US2
- E2US3
- E2EM
- E2FO
- E2RF
- E2SS
- PEM
- PFO
- PSS
- PUB
- R2
- R4
- R6
- Jurisdictional Ditch
- Roadside Ditch
- Study Area



1 inch = 200 feet



# Hampton Roads Crossing Study - Wetland Delineation Maps

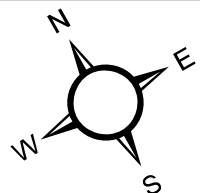
Map 14 of 20  
July 2017

## LEGEND

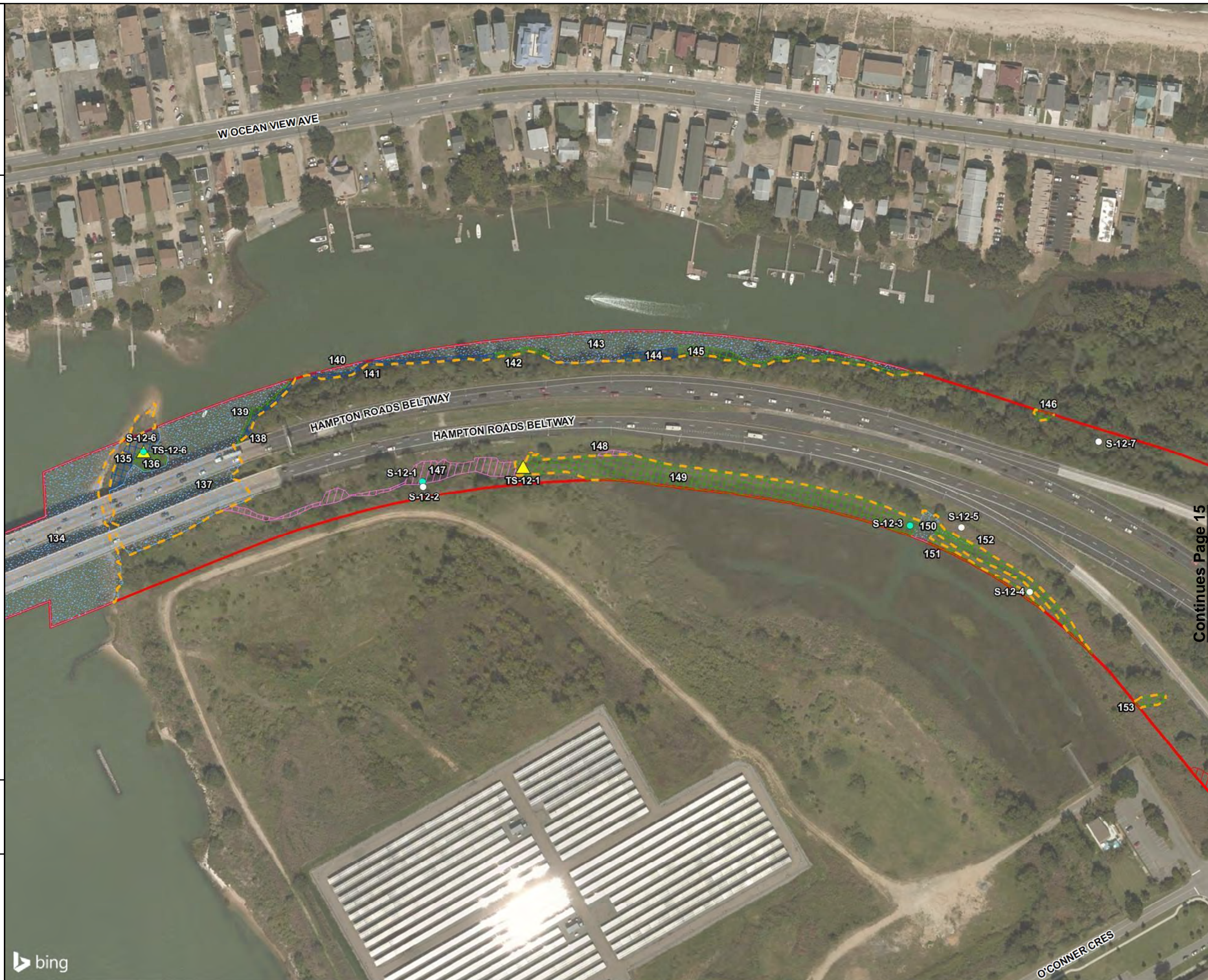
- Wetland Data Point
- Upland Data Point
- USM Break Point
- ▲ Tidal Wetland Confirmation Point
- Pipe
- VMRC Line
- E1OW
- E2US2
- E2US3
- E2EM
- E2FO
- E2RF
- E2SS
- PEM
- PFO
- PSS
- PUB
- R2
- R4
- R6
- Jurisdictional Ditch
- Roadside Ditch
- Study Area

0 100 200 400 600

1 inch = 200 feet



bing



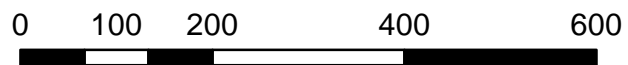
Continues Page 15

# Hampton Roads Crossing Study - Wetland Delineation Maps

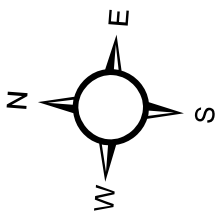
Map 15 of 20  
July 2017

## LEGEND

- Wetland Data Point
- Upland Data Point
- USM Break Point
- ▲ Tidal Wetland Confirmation Point
- Pipe
- VMRC Line
- E1OW
- E2US2
- E2US3
- E2EM
- E2FO
- E2RF
- E2SS
- PEM
- PFO
- PSS
- PUB
- R2
- R4
- R6
- Jurisdictional Ditch
- Roadside Ditch
- Study Area

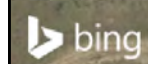


1 inch = 200 feet



Continues Page 14

Continues Page 16

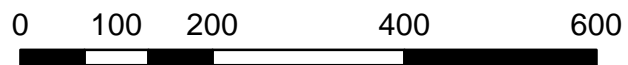


# Hampton Roads Crossing Study - Wetland Delineation Maps

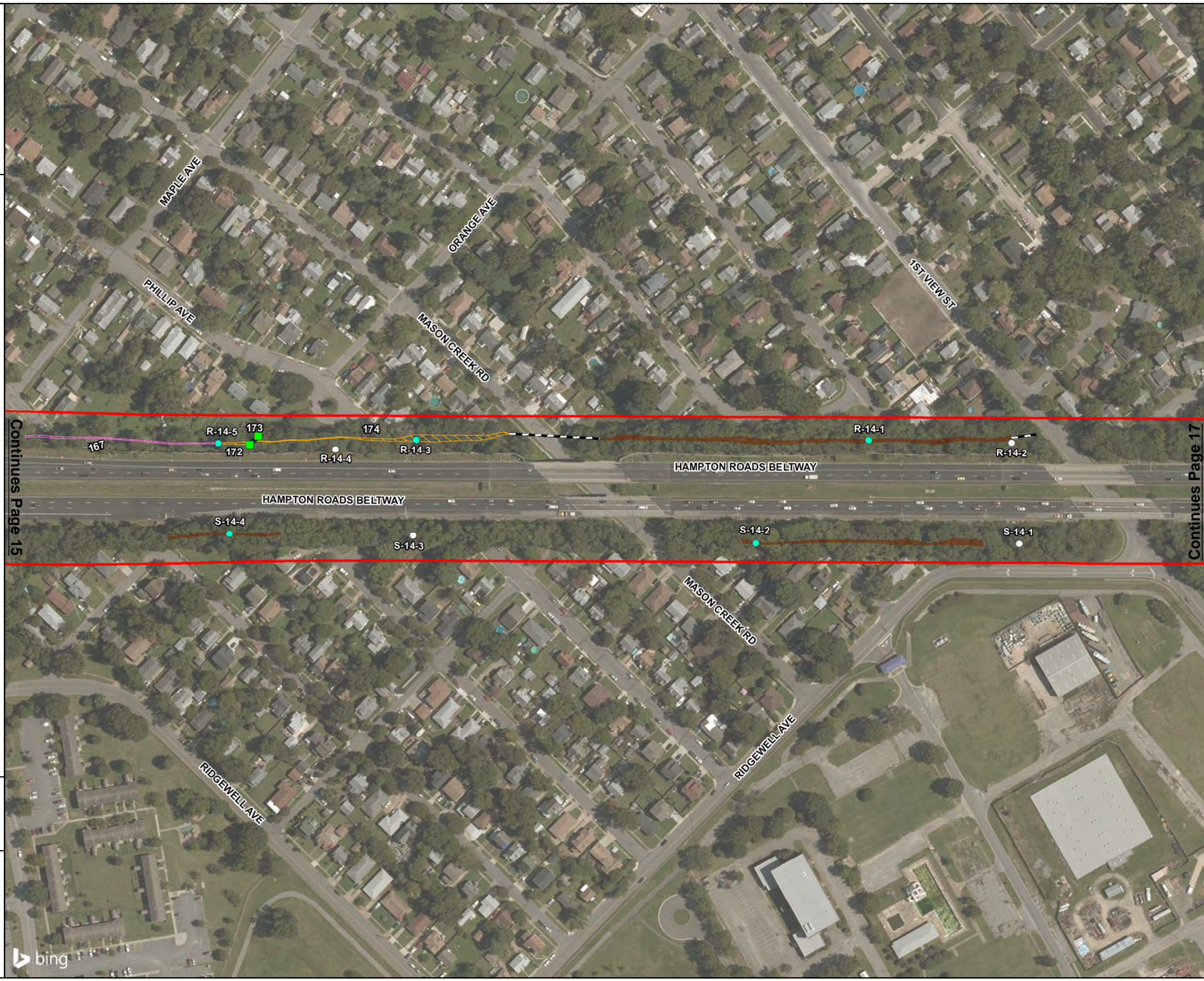
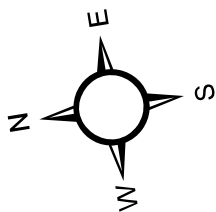
Map 16 of 20  
July 2017

## LEGEND

- Wetland Data Point
- Upland Data Point
- USM Break Point
- ▲ Tidal Wetland Confirmation Point
- Pipe
- VMRC Line
- E1OW
- E2US2
- E2US3
- E2EM
- E2FO
- E2RF
- E2SS
- PEM
- PFO
- PSS
- PUB
- R2
- R4
- R6
- Jurisdictional Ditch
- Roadside Ditch
- Study Area

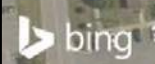


1 inch = 200 feet



Continues Page 15

Continues Page 17



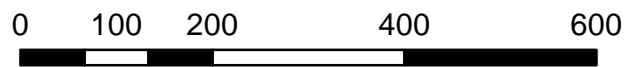


# Hampton Roads Crossing Study - Wetland Delineation Maps

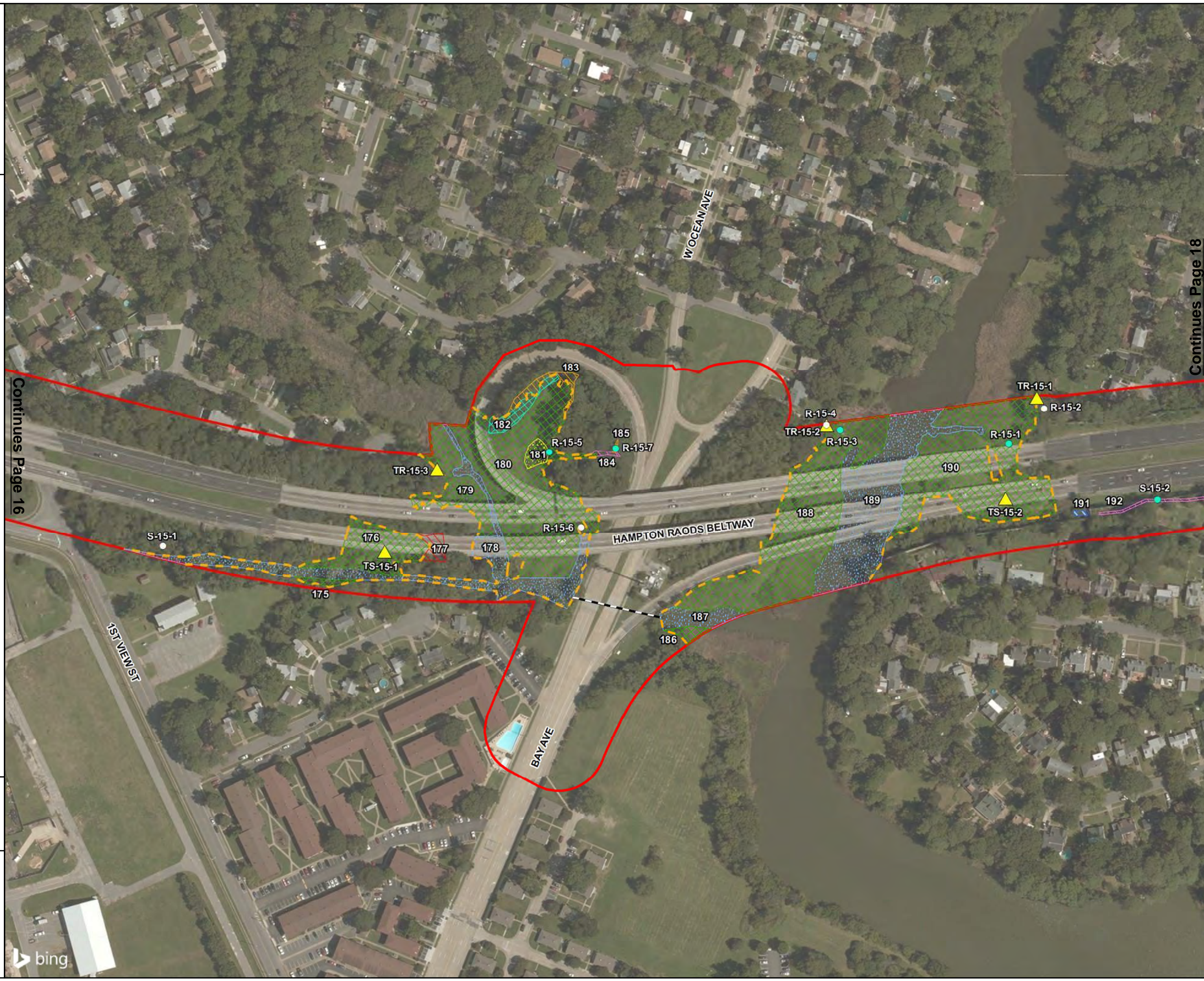
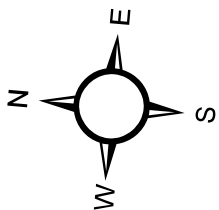
Map 17 of 20  
July 2017

## LEGEND

- Wetland Data Point
- Upland Data Point
- USM Break Point
- ▲ Tidal Wetland Confirmation Point
- Pipe
- VMRC Line
- E1OW
- E2US2
- E2US3
- E2EM
- E2FO
- E2RF
- E2SS
- PEM
- PFO
- PSS
- PUB
- R2
- R4
- R6
- Jurisdictional Ditch
- Roadside Ditch
- Study Area



1 inch = 200 feet



Continues Page 16

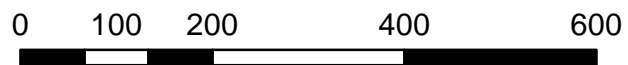
Continues Page 18

# Hampton Roads Crossing Study - Wetland Delineation Maps

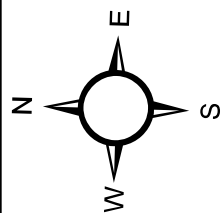
Map 18 of 20  
July 2017

## LEGEND

	Wetland Data Point
	Upland Data Point
	USM Break Point
	Tidal Wetland Confirmation Point
	Pipe
	VMRC Line
	E1OW
	E2US2
	E2US3
	E2EM
	E2FO
	E2RF
	E2SS
	PEM
	PFO
	PSS
	PUB
	R2
	R4
	R6
	Jurisdictional Ditch
	Roadside Ditch
	Study Area

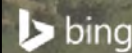


1 inch = 200 feet



Continues Page 17

Continues Page 19

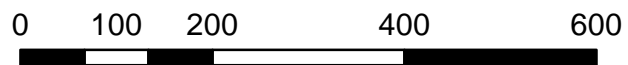


# Hampton Roads Crossing Study - Wetland Delineation Maps

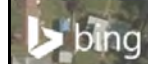
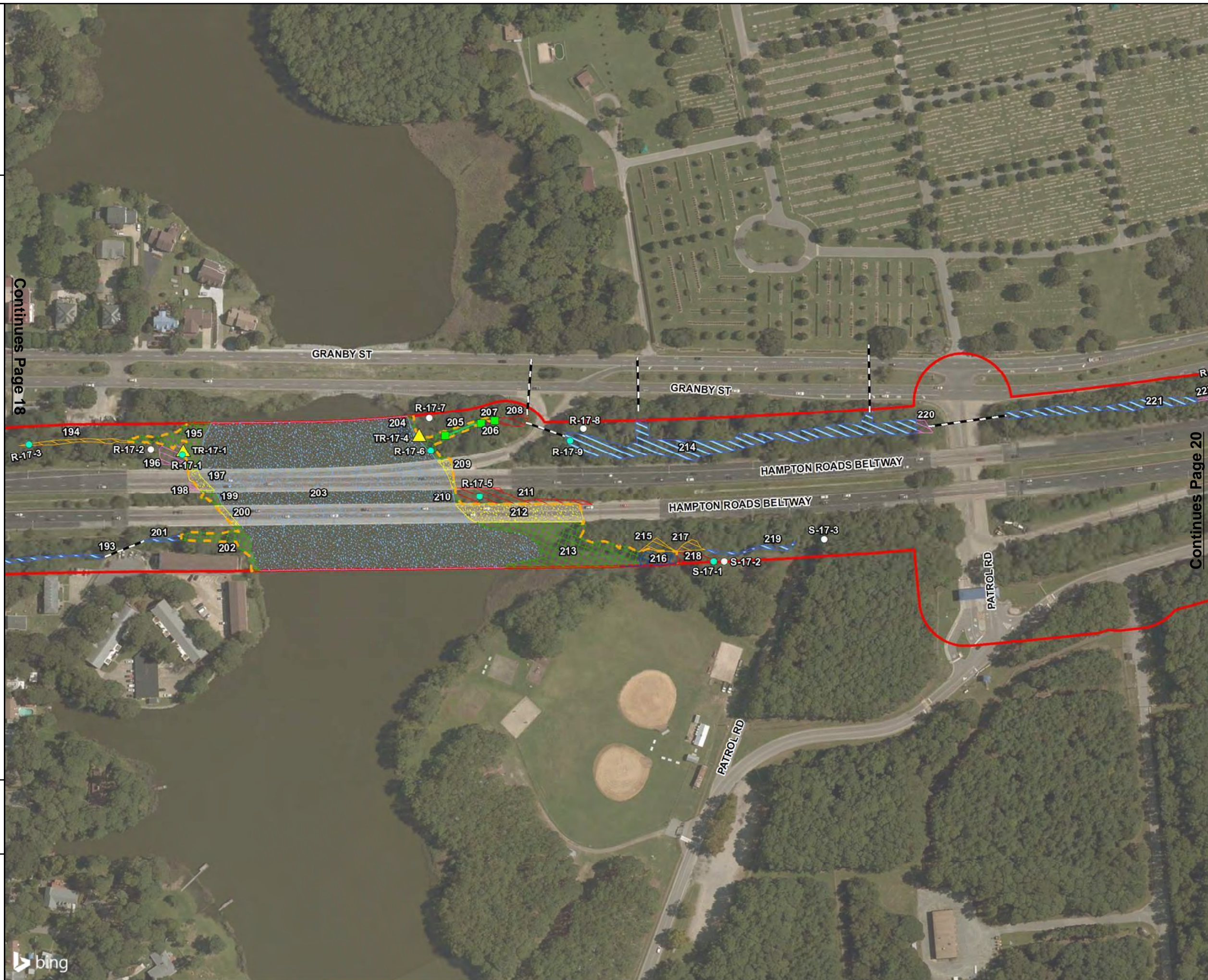
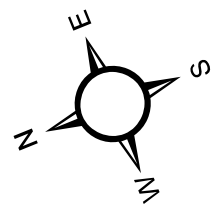
Map 19 of 20  
July 2017

## LEGEND

- Wetland Data Point
- Upland Data Point
- USM Break Point
- ▲ Tidal Wetland Confirmation Point
- Pipe
- VMRC Line
- E1OW
- E2US2
- E2US3
- E2EM
- E2FO
- E2RF
- E2SS
- PEM
- PFO
- PSS
- PUB
- R2
- R4
- R6
- Jurisdictional Ditch
- Roadside Ditch
- Study Area



1 inch = 200 feet

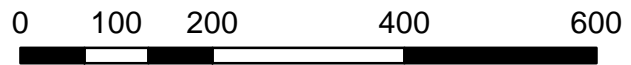


# Hampton Roads Crossing Study - Wetland Delineation Maps

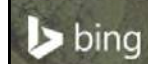
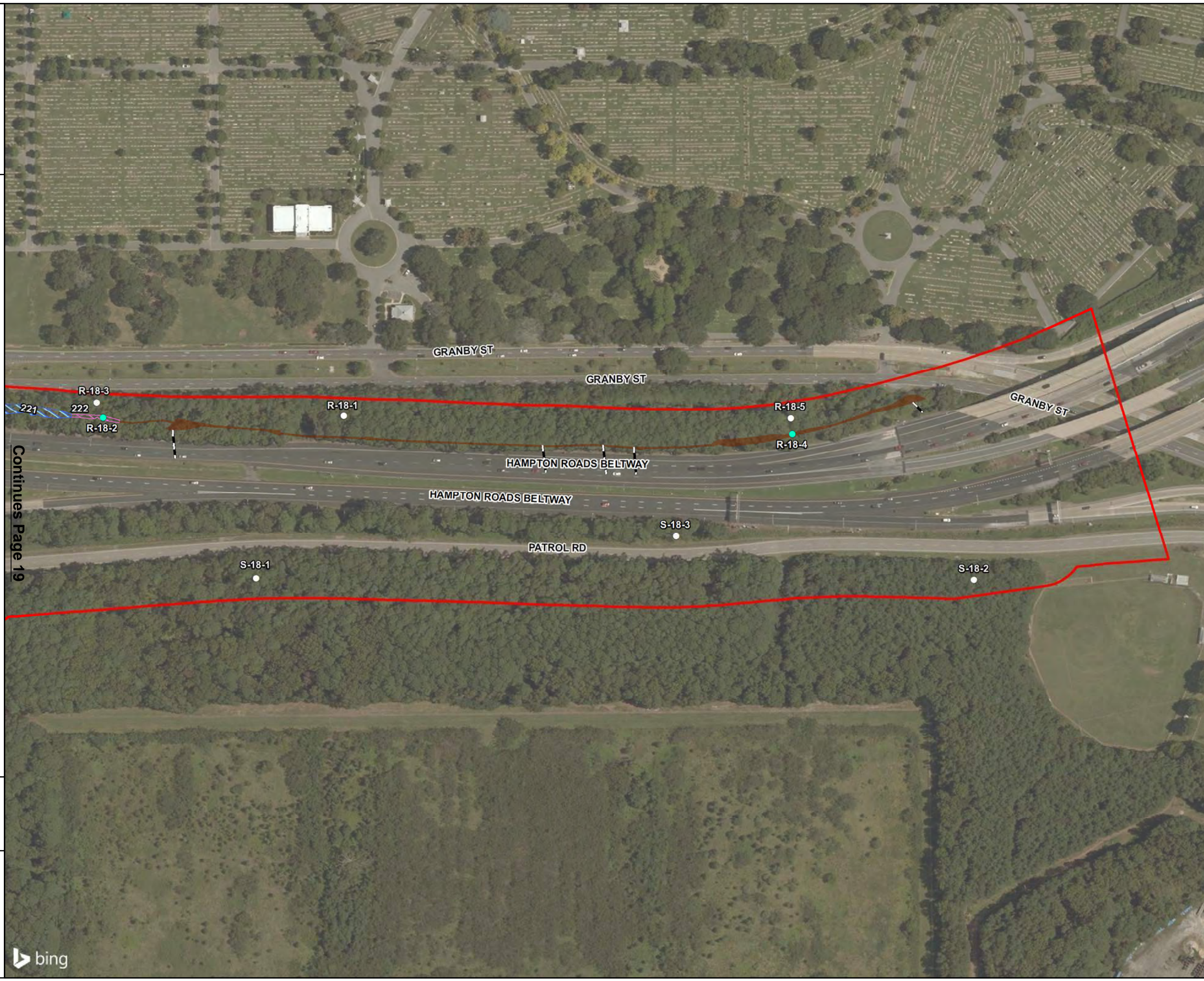
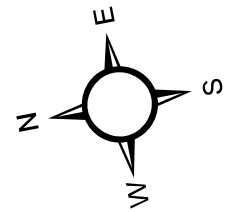
Map 20 of 20  
July 2017

## LEGEND

- Wetland Data Point
- Upland Data Point
- USM Break Point
- ▲ Tidal Wetland Confirmation Point
- Pipe
- VMRC Line
- E1OW
- E2US2
- E2US3
- E2EM
- E2FO
- E2RF
- E2SS
- PEM
- PFO
- PSS
- PUB
- R2
- R4
- R6
- Jurisdictional Ditch
- Roadside Ditch
- Study Area



1 inch = 200 feet



# **ATTACHMENT G-4B: REVISED PJD OCTOBER 2018**



DEPARTMENT OF THE ARMY  
US ARMY CORPS OF ENGINEERS  
NORFOLK DISTRICT  
FORT NORFOLK  
803 FRONT STREET  
NORFOLK VA 23510-1011

October 18, 2018

## PRELIMINARY JURISDICTIONAL DETERMINATION

Eastern Virginia Regulatory Section  
NAO-1994-01166 (Hampton Roads/ Chesapeake Bay)

Scott Smizik, Location Studies Project Manager  
VDOT, Environmental Division  
1401 East Broad Street  
Richmond, Virginia 23219

Dear Mr. Smizik:

This letter is in regard to your request for a revised preliminary jurisdictional determination (PJD) for waters of the U.S. (including wetlands) for Virginia Department of Transportation (VDOT) project 0064-965-081, P101 on property known as the Hampton Roads Crossing, located in areas within and adjacent to the VDOT right-of-way that extends from the Route 664 interchange in Hampton to the Route 564 interchange in Norfolk, Virginia (see attached map). This preliminary jurisdictional determination was done at your request to account for additional limits of disturbance that will be required for the construction of managed traffic (i.e. high-occupancy toll) lanes. Please be aware that this preliminary jurisdictional determination for the new limits of disturbance supplements, and does not replace, the original PJD that was sent on September 19, 2017.

The maps entitled "HRCS wetland maps parts 1 and 2", by RK&K/ VDOT dated September 2018 and Corps date stamped as received September 28, 2018 (copy enclosed) provide the locations of waters and wetlands on the property listed above. The basis for this delineation includes application of the Corps' 1987 Wetland Delineation Manual (*and Regional Supplement to the Corps of Engineers Wetland Delineation Manual: Atlantic and Gulf Coastal Plain Region*) and the positive indicators of wetland hydrology, hydric soils, and hydrophytic vegetation and the presence of an ordinary high water mark. This letter is not confirming the Cowardin classifications of these aquatic resources.

Discharges of dredged or fill material, including those associated with mechanized landclearing, into waters and/or wetlands on this site may require a Department of the Army permit and authorization by state and local authorities including a Virginia Water Protection Permit from the Virginia Department of Environmental Quality (DEQ), a permit from the Virginia Marine Resources Commission (VMRC) and/or a permit from your local wetlands board. This letter is a confirmation of the Corps preliminary jurisdiction for the waters and/or wetlands on the subject property and does not

authorize any work in these areas. Please obtain all required permits before starting work in the delineated waters/wetland areas.

This is a preliminary jurisdictional determination and is therefore not a legally binding determination regarding whether Corps jurisdiction applies to the waters or wetlands in question. Accordingly, you may either consent to jurisdiction as set out in this preliminary jurisdictional determination and the attachments hereto if you agree with the determination, or you may request and obtain an approved jurisdictional determination. This preliminary jurisdictional determination and associated wetland delineation map may be submitted with a permit application.

Enclosed is a copy of the "Preliminary Jurisdictional Determination Form". Please review the document, sign, and return one copy to me either via email (george.a.janek@usace.army.mil) or via standard mail to US Army Corps of Engineers, Regulatory Office, ATTN: George Janek, 803 Front Street Norfolk, Virginia 23510-1096 within 30 days of receipt and keep one for your records. This delineation of waters and/or wetlands can be relied upon for no more than five years from the date of this letter. New information may warrant revision.

If you have any questions, please contact me by calling (757) 201-7135 or by emailing me at the address above.

Sincerely,



George Janek  
Project Manager, Eastern Virginia  
Regulatory Section

Enclosure(s):  
Appeals Form  
Delineation Map  
Preliminary Jurisdictional Determination Form

Cc: Travis Comer, RK&K  
Virginia Department of Environmental Quality, Larissa Ambrose  
VMRC, Allison Norris

**Figure 1-1: Refined Study Area**





# Environmental Assessment Re-Evaluation of the HRCS SEIS

## Appendix B: Wetland Delineation Maps

Map 1 of 20

September 2018

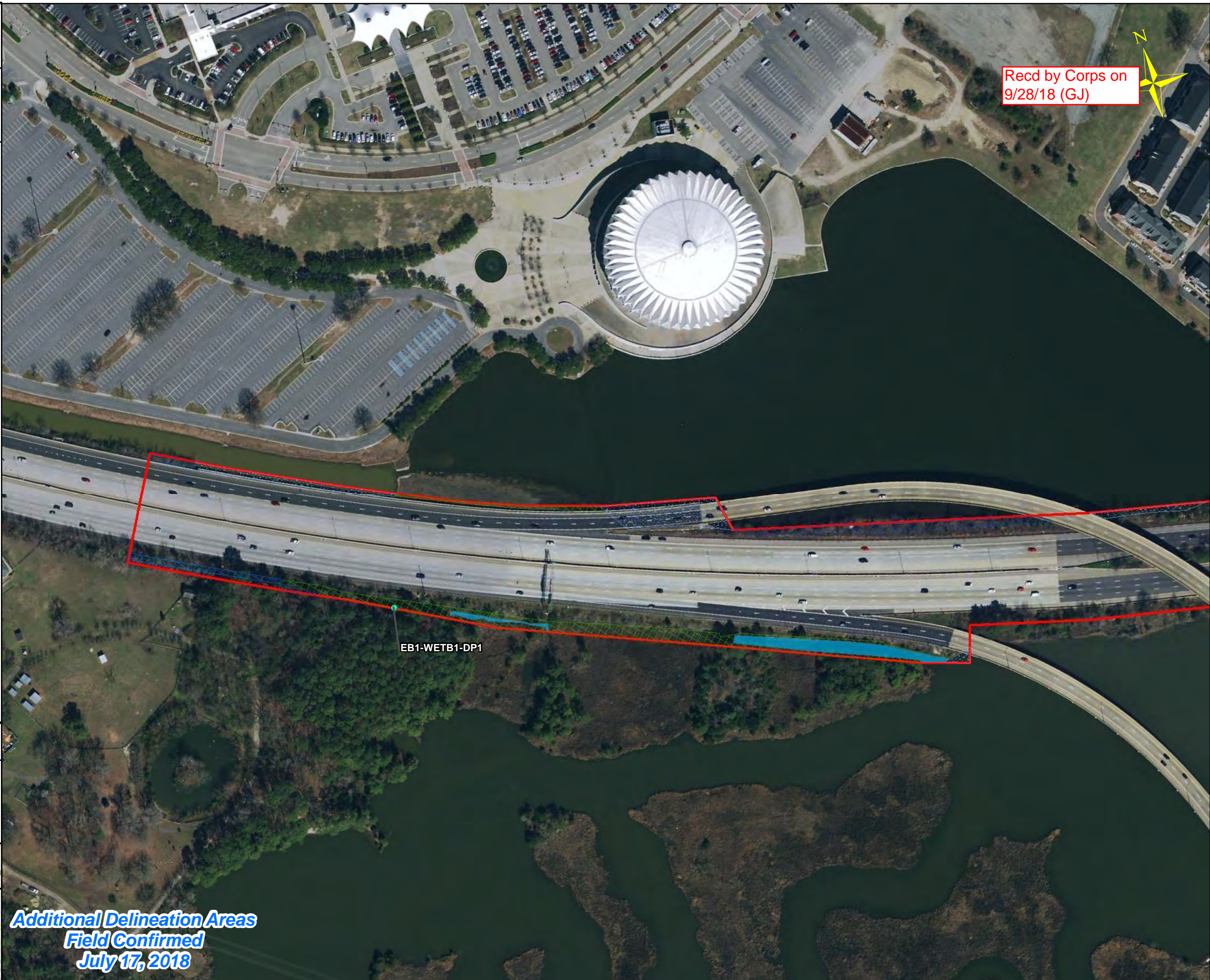
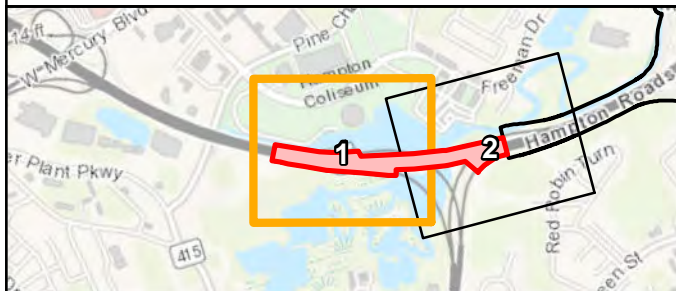
### LEGEND

- Additional Delineation Areas
- Refined Study Area
- Roadside Ditch
- Pipe
- Wetland Data Point
- Upland Data Point

#### DELINEATED FEATURES

- |  |   |
|--|---|
| <span style="background-color: #cccccc; border: 1px solid black; display: inline-block; width: 15px; height: 10px; margin-right: 5px;"></span> E1OW                              | <span style="background-color: #90ee90; border: 1px solid black; display: inline-block; width: 15px; height: 10px; margin-right: 5px;"></span> E2EM   |
| <span style="background-color: #00bfff; border: 1px solid black; display: inline-block; width: 15px; height: 10px; margin-right: 5px;"></span> R1                                | <span style="background-color: #90ee90; border: 1px solid black; border-style: dashed; display: inline-block; width: 15px; height: 10px; margin-right: 5px;"></span> E2FO                     |
| <span style="background-color: #ff00ff; border: 1px solid black; display: inline-block; width: 15px; height: 10px; margin-right: 5px;"></span> R2                                | <span style="background-color: #90ee90; border: 1px solid black; border-style: dotted; display: inline-block; width: 15px; height: 10px; margin-right: 5px;"></span> E2RF                     |
| <span style="background-color: #00ff00; border: 1px solid black; display: inline-block; width: 15px; height: 10px; margin-right: 5px;"></span> R4                                | <span style="background-color: #90ee90; border: 1px solid black; border-style: dashed; border-color: blue; display: inline-block; width: 15px; height: 10px; margin-right: 5px;"></span> E2SS |
| <span style="background-color: #0000ff; border: 1px solid black; display: inline-block; width: 15px; height: 10px; margin-right: 5px;"></span> R6                                | <span style="background-color: #ffcc99; border: 1px solid black; display: inline-block; width: 15px; height: 10px; margin-right: 5px;"></span> PEM  |
| <span style="background-color: #cccccc; border: 1px solid black; border-style: dashed; display: inline-block; width: 15px; height: 10px; margin-right: 5px;"></span> Tidal Ditch | <span style="background-color: #ffcc99; border: 1px solid black; border-style: dotted; display: inline-block; width: 15px; height: 10px; margin-right: 5px;"></span> PFO                      |
| <span style="background-color: #ffcccc; border: 1px solid black; display: inline-block; width: 15px; height: 10px; margin-right: 5px;"></span> Jurisdictional Ditch              | <span style="background-color: #ffcccc; border: 1px solid black; border-style: dashed; display: inline-block; width: 15px; height: 10px; margin-right: 5px;"></span> PSS                      |
| <span style="background-color: #ffff00; border: 1px solid black; border-style: dotted; display: inline-block; width: 15px; height: 10px; margin-right: 5px;"></span> E2US2       | <span style="background-color: #cccccc; border: 1px solid black; border-style: dashed; border-color: blue; display: inline-block; width: 15px; height: 10px; margin-right: 5px;"></span> PUB  |
| <span style="background-color: #ff0000; border: 1px solid black; border-style: dotted; display: inline-block; width: 15px; height: 10px; margin-right: 5px;"></span> E2US3       |   |

0 100 200 400  
1 inch = 200 feet



**Additional Delineation Areas  
Field Confirmed  
July 17, 2018**

# Environmental Assessment Re-Evaluation of the HRCS SEIS

## Appendix B: Wetland Delineation Maps

Map 2 of 20

September 2018

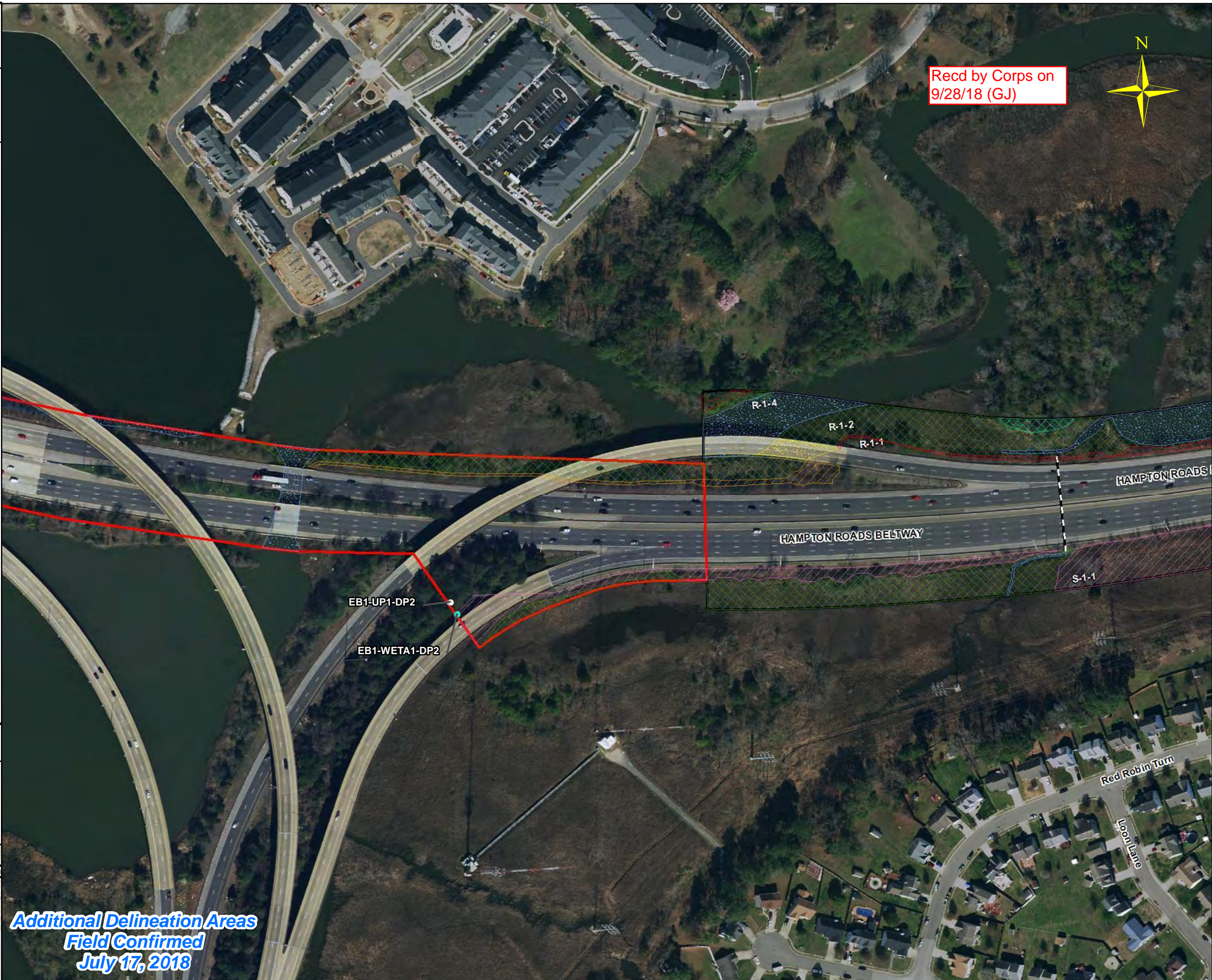
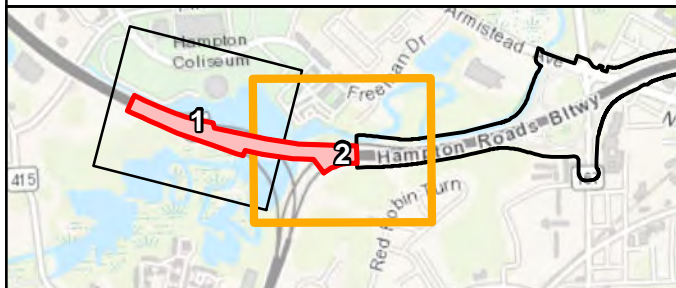
### LEGEND

- Additional Delineation Areas
- Refined Study Area
- Roadside Ditch
- Pipe
- Wetland Data Point
- Upland Data Point

#### DELINEATED FEATURES

- |  |   |
|--|---|
| <span style="background-color: #e0e0e0; border: 1px solid black; display: inline-block; width: 15px; height: 10px; margin-right: 5px;"></span> E1OW                              | <span style="background-color: #90ee90; border: 1px solid black; display: inline-block; width: 15px; height: 10px; margin-right: 5px;"></span> E2EM   |
| <span style="background-color: #00bfff; border: 1px solid black; display: inline-block; width: 15px; height: 10px; margin-right: 5px;"></span> R1                                | <span style="background-color: #90ee90; border: 1px solid black; border-style: dashed; display: inline-block; width: 15px; height: 10px; margin-right: 5px;"></span> E2FO                     |
| <span style="background-color: #ff00ff; border: 1px solid black; display: inline-block; width: 15px; height: 10px; margin-right: 5px;"></span> R2                                | <span style="background-color: #90ee90; border: 1px solid black; border-style: dotted; display: inline-block; width: 15px; height: 10px; margin-right: 5px;"></span> E2RF                     |
| <span style="background-color: #00ff00; border: 1px solid black; display: inline-block; width: 15px; height: 10px; margin-right: 5px;"></span> R4                                | <span style="background-color: #90ee90; border: 1px solid black; border-style: dashed; border-color: blue; display: inline-block; width: 15px; height: 10px; margin-right: 5px;"></span> E2SS |
| <span style="background-color: #0000ff; border: 1px solid black; display: inline-block; width: 15px; height: 10px; margin-right: 5px;"></span> R6                                | <span style="background-color: #ffcc99; border: 1px solid black; display: inline-block; width: 15px; height: 10px; margin-right: 5px;"></span> PEM  |
| <span style="background-color: #cccccc; border: 1px solid black; border-style: dashed; display: inline-block; width: 15px; height: 10px; margin-right: 5px;"></span> Tidal Ditch | <span style="background-color: #ffcc99; border: 1px solid black; border-style: dotted; display: inline-block; width: 15px; height: 10px; margin-right: 5px;"></span> PFO                      |
| <span style="background-color: #ffcccc; border: 1px solid black; display: inline-block; width: 15px; height: 10px; margin-right: 5px;"></span> Jurisdictional Ditch              | <span style="background-color: #ffcccc; border: 1px solid black; border-style: dotted; display: inline-block; width: 15px; height: 10px; margin-right: 5px;"></span> PSS                      |
| <span style="background-color: #ffff00; border: 1px solid black; border-style: dashed; display: inline-block; width: 15px; height: 10px; margin-right: 5px;"></span> E2US2       | <span style="background-color: #cccccc; border: 1px solid black; border-style: dashed; border-color: blue; display: inline-block; width: 15px; height: 10px; margin-right: 5px;"></span> PUB  |
| <span style="background-color: #ff0000; border: 1px solid black; border-style: dashed; display: inline-block; width: 15px; height: 10px; margin-right: 5px;"></span> E2US3       |   |

0 100 200 400  
1 inch = 200 feet



Recd by Corps on  
9/28/18 (GJ)



Additional Delineation Areas  
Field Confirmed  
July 17, 2018

# Environmental Assessment Re-Evaluation of the HRCS SEIS

Appendix B: Wetland Delineation Maps  
Map 3 of 20  
September 2018

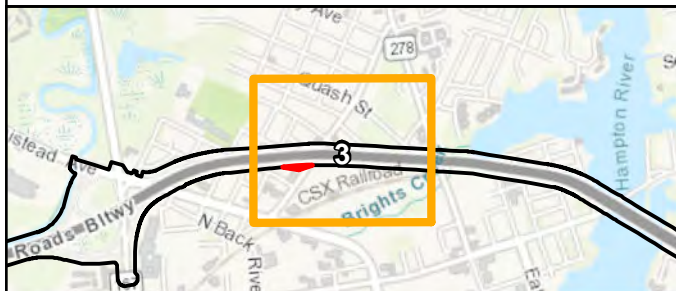
## LEGEND

- Additional Delineation Areas
- Refined Study Area
- Roadside Ditch
- Pipe
- Wetland Data Point
- Upland Data Point

### DELINEATED FEATURES

- |   |   |
|---|---|
| <span style="background-color: #d3d3d3; border: 1px solid black; display: inline-block; width: 15px; height: 10px; margin-right: 5px;"></span> E1OW                                       | <span style="background-color: #90ee90; border: 1px solid black; display: inline-block; width: 15px; height: 10px; margin-right: 5px;"></span> E2EM                       |
| <span style="background-color: #00bfff; border: 1px solid black; display: inline-block; width: 15px; height: 10px; margin-right: 5px;"></span> R1   | <span style="background-color: #90ee90; border: 1px solid black; border-style: dashed; display: inline-block; width: 15px; height: 10px; margin-right: 5px;"></span> E2FO |
| <span style="background-color: #ff00ff; border: 1px solid black; display: inline-block; width: 15px; height: 10px; margin-right: 5px;"></span> R2   | <span style="background-color: #ff00ff; border: 1px solid black; border-style: dashed; display: inline-block; width: 15px; height: 10px; margin-right: 5px;"></span> E2RF |
| <span style="background-color: #00ff00; border: 1px solid black; display: inline-block; width: 15px; height: 10px; margin-right: 5px;"></span> R4   | <span style="background-color: #00ff00; border: 1px solid black; border-style: dashed; display: inline-block; width: 15px; height: 10px; margin-right: 5px;"></span> E2SS |
| <span style="background-color: #0000ff; border: 1px solid black; display: inline-block; width: 15px; height: 10px; margin-right: 5px;"></span> R6   | <span style="background-color: #ff0000; border: 1px solid black; border-style: dashed; display: inline-block; width: 15px; height: 10px; margin-right: 5px;"></span> PEM  |
| <span style="background-color: #0000ff; border: 1px solid black; border-style: dashed; display: inline-block; width: 15px; height: 10px; margin-right: 5px;"></span> Tidal Ditch          | <span style="background-color: #ffff00; border: 1px solid black; border-style: dashed; display: inline-block; width: 15px; height: 10px; margin-right: 5px;"></span> PFO  |
| <span style="background-color: #ffe4e1; border: 1px solid black; border-style: dashed; display: inline-block; width: 15px; height: 10px; margin-right: 5px;"></span> Jurisdictional Ditch | <span style="background-color: #ff0000; border: 1px solid black; border-style: dashed; display: inline-block; width: 15px; height: 10px; margin-right: 5px;"></span> PSS  |
| <span style="background-color: #ffff00; border: 1px solid black; border-style: dashed; display: inline-block; width: 15px; height: 10px; margin-right: 5px;"></span> E2US2                | <span style="background-color: #0000ff; border: 1px solid black; border-style: dashed; display: inline-block; width: 15px; height: 10px; margin-right: 5px;"></span> PUB  |
| <span style="background-color: #ff0000; border: 1px solid black; border-style: dashed; display: inline-block; width: 15px; height: 10px; margin-right: 5px;"></span> E2US3                |   |

0 100 200 400  
1 inch = 200 feet



Recd by Corps on  
9/28/18 (GJ)

Additional Delineation Areas  
Field Confirmed  
July 17, 2018

# Environmental Assessment Re-Evaluation of the HRCS SEIS

Appendix B: Wetland Delineation Maps  
Map 4 of 20  
September 2018

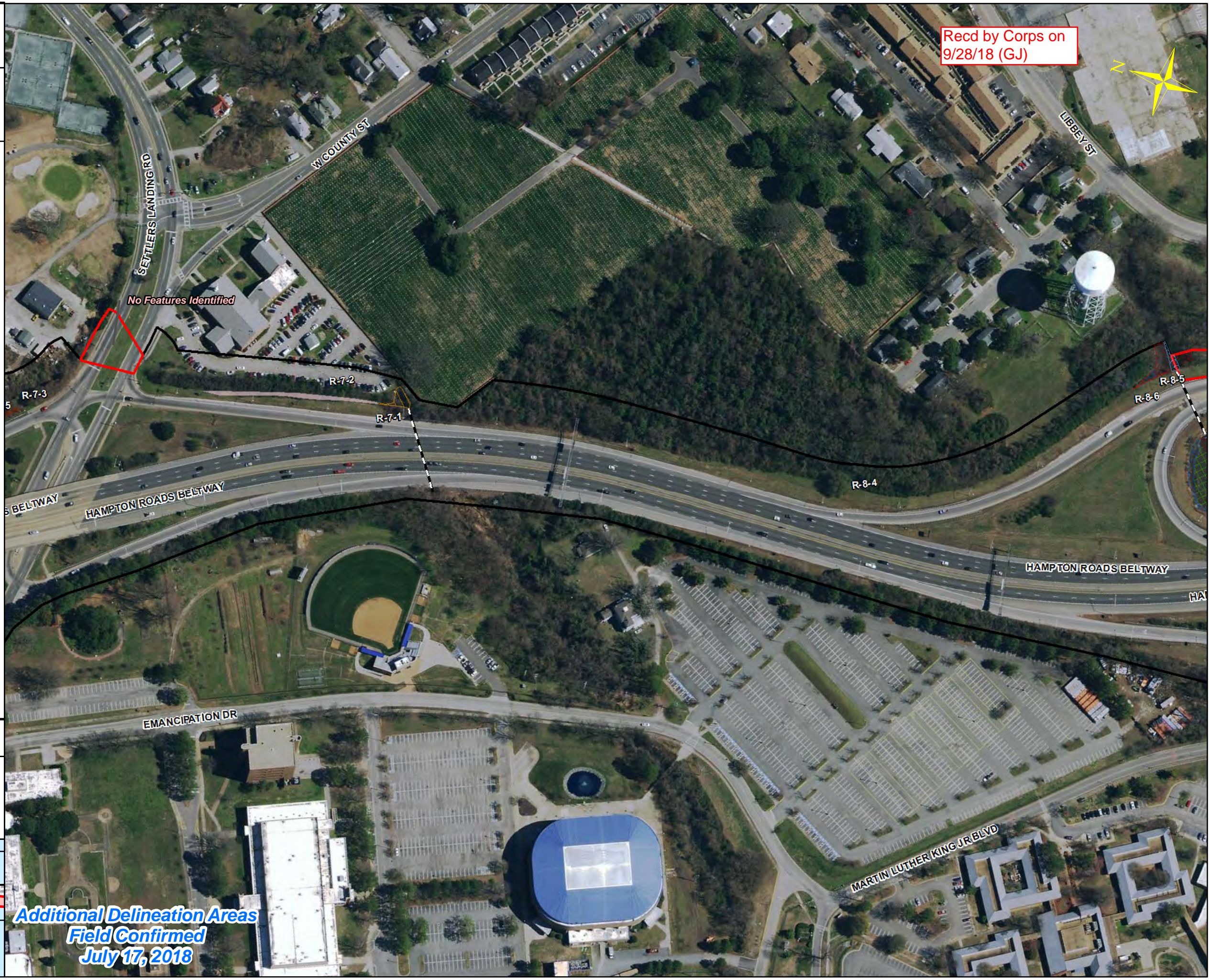
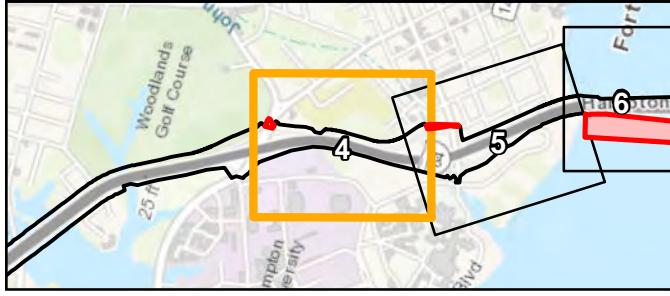
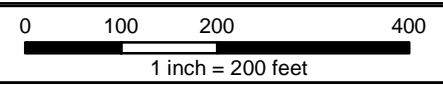
Recd by Corps on  
9/28/18 (GJ)



## LEGEND

- Additional Delineation Areas
- Refined Study Area
- Roadside Ditch
- Pipe
- Wetland Data Point
- Upland Data Point

DELINEATED FEATURES	
<span style="background-color: #d3d3d3; border: 1px solid black; display: inline-block; width: 15px; height: 10px; margin-right: 5px;"></span> E1OW	<span style="background-color: #90ee90; border: 1px solid black; display: inline-block; width: 15px; height: 10px; margin-right: 5px;"></span> E2EM
<span style="background-color: #00bfff; border: 1px solid black; display: inline-block; width: 15px; height: 10px; margin-right: 5px;"></span> R1	<span style="background-color: #90ee90; border: 1px solid black; display: inline-block; width: 15px; height: 10px; margin-right: 5px;"></span> E2FO
<span style="background-color: #ff00ff; border: 1px solid black; display: inline-block; width: 15px; height: 10px; margin-right: 5px;"></span> R2	<span style="background-color: #90ee90; border: 1px solid black; display: inline-block; width: 15px; height: 10px; margin-right: 5px;"></span> E2RF
<span style="background-color: #00ff00; border: 1px solid black; display: inline-block; width: 15px; height: 10px; margin-right: 5px;"></span> R4	<span style="background-color: #90ee90; border: 1px solid black; display: inline-block; width: 15px; height: 10px; margin-right: 5px;"></span> E2SS
<span style="background-color: #0000ff; border: 1px solid black; display: inline-block; width: 15px; height: 10px; margin-right: 5px;"></span> R6	<span style="background-color: #90ee90; border: 1px solid black; display: inline-block; width: 15px; height: 10px; margin-right: 5px;"></span> PEM
<span style="background-color: #add8e6; border: 1px solid black; display: inline-block; width: 15px; height: 10px; margin-right: 5px;"></span> Tidal Ditch	<span style="background-color: #90ee90; border: 1px solid black; display: inline-block; width: 15px; height: 10px; margin-right: 5px;"></span> PFO
<span style="background-color: #ffe4e1; border: 1px solid black; display: inline-block; width: 15px; height: 10px; margin-right: 5px;"></span> Jurisdictional Ditch	<span style="background-color: #90ee90; border: 1px solid black; display: inline-block; width: 15px; height: 10px; margin-right: 5px;"></span> PSS
<span style="background-color: #ffff00; border: 1px solid black; display: inline-block; width: 15px; height: 10px; margin-right: 5px;"></span> E2US2	<span style="background-color: #90ee90; border: 1px solid black; display: inline-block; width: 15px; height: 10px; margin-right: 5px;"></span> PUB
<span style="background-color: #ff0000; border: 1px solid black; display: inline-block; width: 15px; height: 10px; margin-right: 5px;"></span> E2US3	



**Additional Delineation Areas  
Field Confirmed  
July 17, 2018**

# Environmental Assessment Re-Evaluation of the HRCS SEIS

Appendix B: Wetland Delineation Maps  
Map 5 of 20  
September 2018

Recd by Corps on  
9/28/18 (GJ)

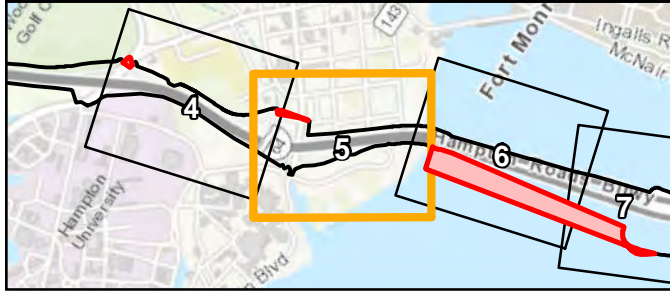
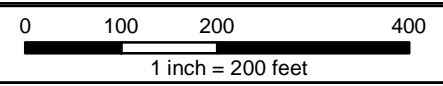


## LEGEND

	Additional Delineation Areas
	Refined Study Area
	Roadside Ditch
	Pipe
	Wetland Data Point
	Upland Data Point

DELINEATED FEATURES			
	E1OW		E2EM
	R1		E2FO
	R2		E2RF
	R4		E2SS
	R6		PEM
	Tidal Ditch		PFO
	Jurisdictional Ditch		PSS
	E2US2		PUB
	E2US3		



Additional Delineation Areas  
Field Confirmed  
July 17, 2018

# Environmental Assessment Re-Evaluation of the HRCS SEIS

Appendix B: Wetland Delineation Maps  
Map 6 of 20  
September 2018

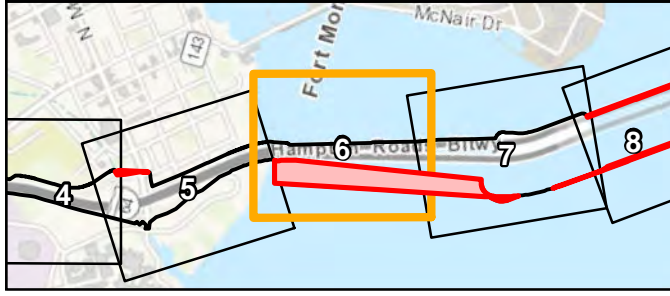
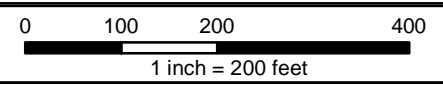
Recd by Corps on  
9/28/18 (GJ)



## LEGEND

- Additional Delineation Areas
- Refined Study Area
- Roadside Ditch
- Pipe
- Wetland Data Point
- Upland Data Point

DELINEATED FEATURES	
E1OW	E2EM
R1	E2FO
R2	E2RF
R4	E2SS
R6	PEM
Tidal Ditch	PFO
Jurisdictional Ditch	PSS
E2US2	PUB
E2US3	



**Additional Delineation Areas  
Field Confirmed  
July 17, 2018**

# Environmental Assessment Re-Evaluation of the HRCS SEIS

## Appendix B: Wetland Delineation Maps

Map 7 of 20

September 2018

Recd by Corps on  
9/28/18 (GJ)

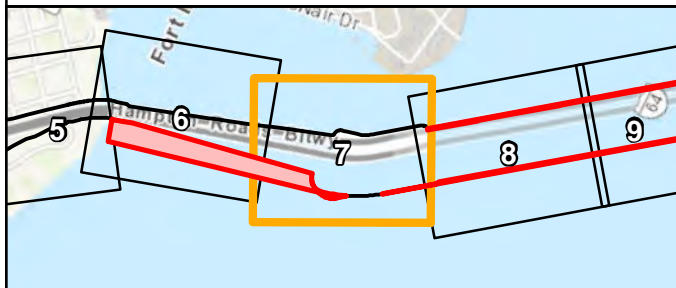
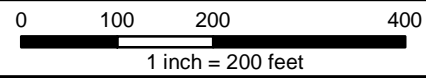


### LEGEND

	Additional Delineation Areas
	Refined Study Area
	Roadside Ditch
	Pipe
	Wetland Data Point
	Upland Data Point

DELINEATED FEATURES	
	E1OW
	R1
	R2
	R4
	R6
	Tidal Ditch
	Jurisdictional Ditch
	E2US2
	E2US3
	E2EM
	E2FO
	E2RF
	E2SS
	PEM
	PFO
	PSS
	PUB



**Additional Delineation Areas  
Field Confirmed  
July 17, 2018**

# Environmental Assessment Re-Evaluation of the HRCS SEIS

## Appendix B: Wetland Delineation Maps

Map 8 of 20

September 2018

Recd by Corps on  
9/28/18 (GJ)



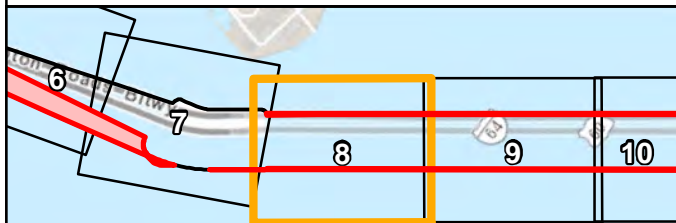
### LEGEND

- Additional Delineation Areas
- Refined Study Area
- Roadside Ditch
- Pipe
- Wetland Data Point
- Upland Data Point

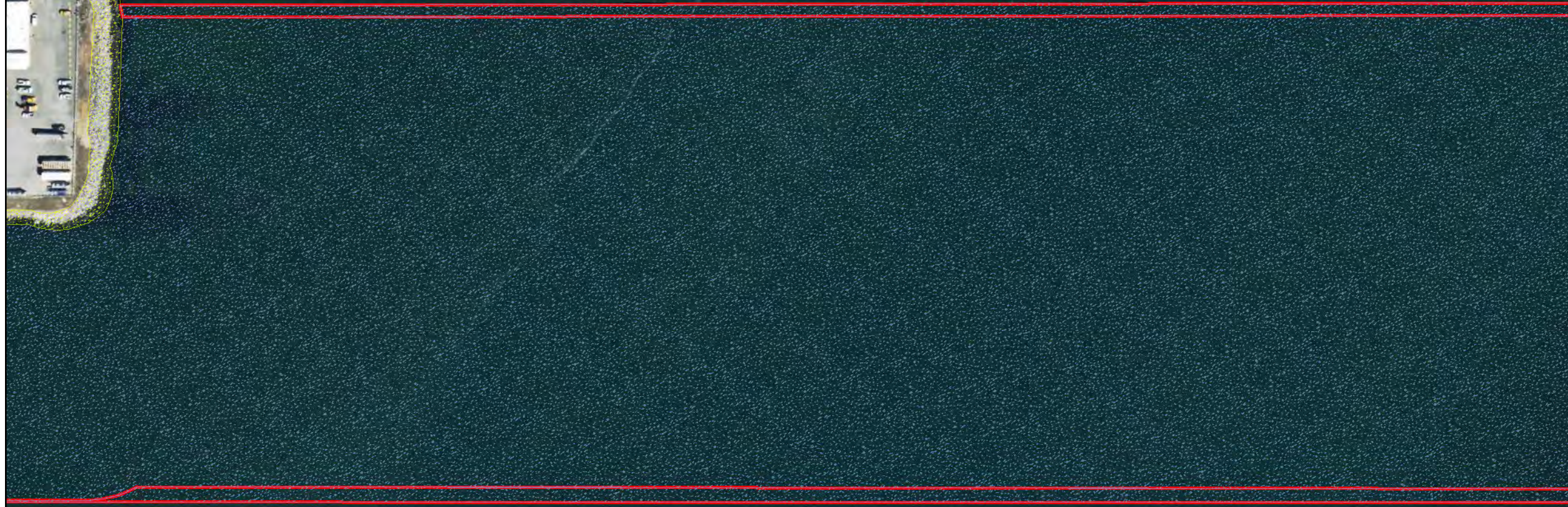
#### DELINEATED FEATURES

- |                      |      |
|----------------------|------|
| E1OW                 | E2EM |
| R1                   | E2FO |
| R2                   | E2RF |
| R4                   | E2SS |
| R6                   | PEM  |
| Tidal Ditch          | PFO  |
| Jurisdictional Ditch | PSS  |
| E2US2                | PUB  |
| E2US3                |      |

0 100 200 400  
1 inch = 200 feet



**Additional Delineation Areas**  
**Field Confirmed**  
**July 17, 2018**





# Environmental Assessment Re-Evaluation of the HRCS SEIS

## Appendix B: Wetland Delineation Maps

Map 9 of 20

September 2018

Recd by Corps on  
9/28/18 (GJ)



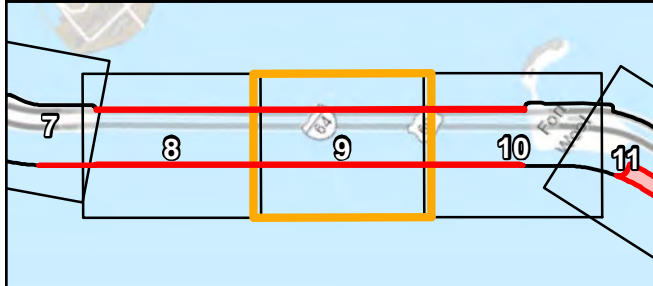
### LEGEND

- Additional Delineation Areas
- Refined Study Area
- Roadside Ditch
- Pipe
- Wetland Data Point
- Upland Data Point

#### DELINEATED FEATURES

- |                      |      |
|----------------------|------|
| E1OW                 | E2EM |
| R1                   | E2FO |
| R2                   | E2RF |
| R4                   | E2SS |
| R6                   | PEM  |
| Tidal Ditch          | PFO  |
| Jurisdictional Ditch | PSS  |
| E2US2                | PUB  |
| E2US3                |      |

0 100 200 400  
1 inch = 200 feet



**Additional Delineation Areas  
Field Confirmed  
July 17, 2018**







# Environmental Assessment Re-Evaluation of the HRCS SEIS

## Appendix B: Wetland Delineation Maps

Map 10 of 20

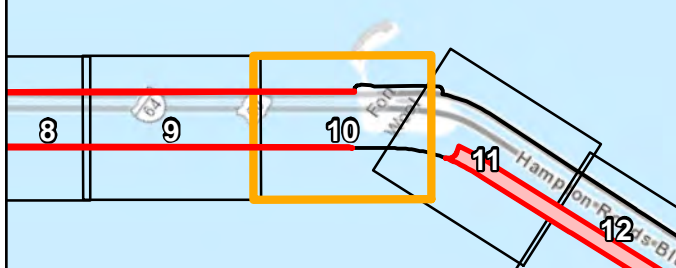
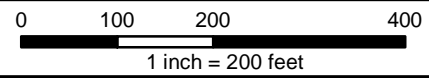
September 2018

### LEGEND

-  Additional Delineation Areas
-  Refined Study Area
-  Roadside Ditch
-  Pipe
-  Wetland Data Point
-  Upland Data Point

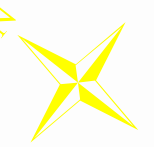
#### DELINEATED FEATURES

- |  |  |
|--|--|
|  E1OW                   |  E2EM   |
|  R1                    |  E2FO  |
|  R2                   |  E2RF |
|  R4                   |  E2SS |
|  R6                   |  PEM  |
|  Tidal Ditch          |  PFO  |
|  Jurisdictional Ditch |  PSS  |
|  E2US2                |  PUB  |
|  E2US3                |  |



**Additional Delineation Areas  
Field Confirmed  
July 17, 2018**

Recd by Corps on  
9/28/18 (GJ)







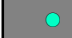

# Environmental Assessment Re-Evaluation of the HRCS SEIS

## Appendix B: Wetland Delineation Maps

Map 11 of 20

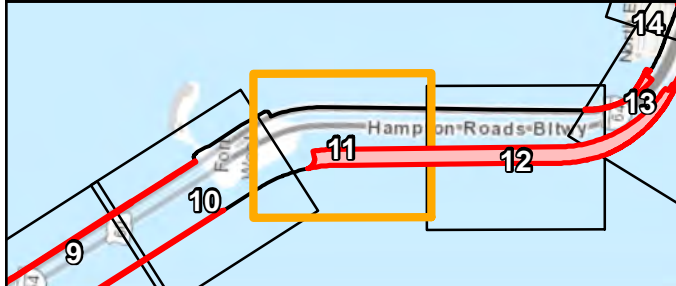
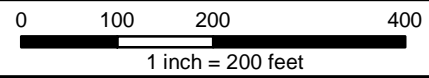
September 2018

### LEGEND

-  Additional Delineation Areas
-  Refined Study Area
-  Roadside Ditch
-  Pipe
-  Wetland Data Point
-  Upland Data Point

#### DELINEATED FEATURES

- |  |  |
|--|--|
|  E1OW                   |  E2EM   |
|  R1                    |  E2FO  |
|  R2                   |  E2RF |
|  R4                   |  E2SS |
|  R6                   |  PEM  |
|  Tidal Ditch          |  PFO  |
|  Jurisdictional Ditch |  PSS  |
|  E2US2                |  PUB  |
|  E2US3                |  |



**Additional Delineation Areas  
Field Confirmed  
July 17, 2018**

Recd by Corps on  
9/28/18 (GJ)